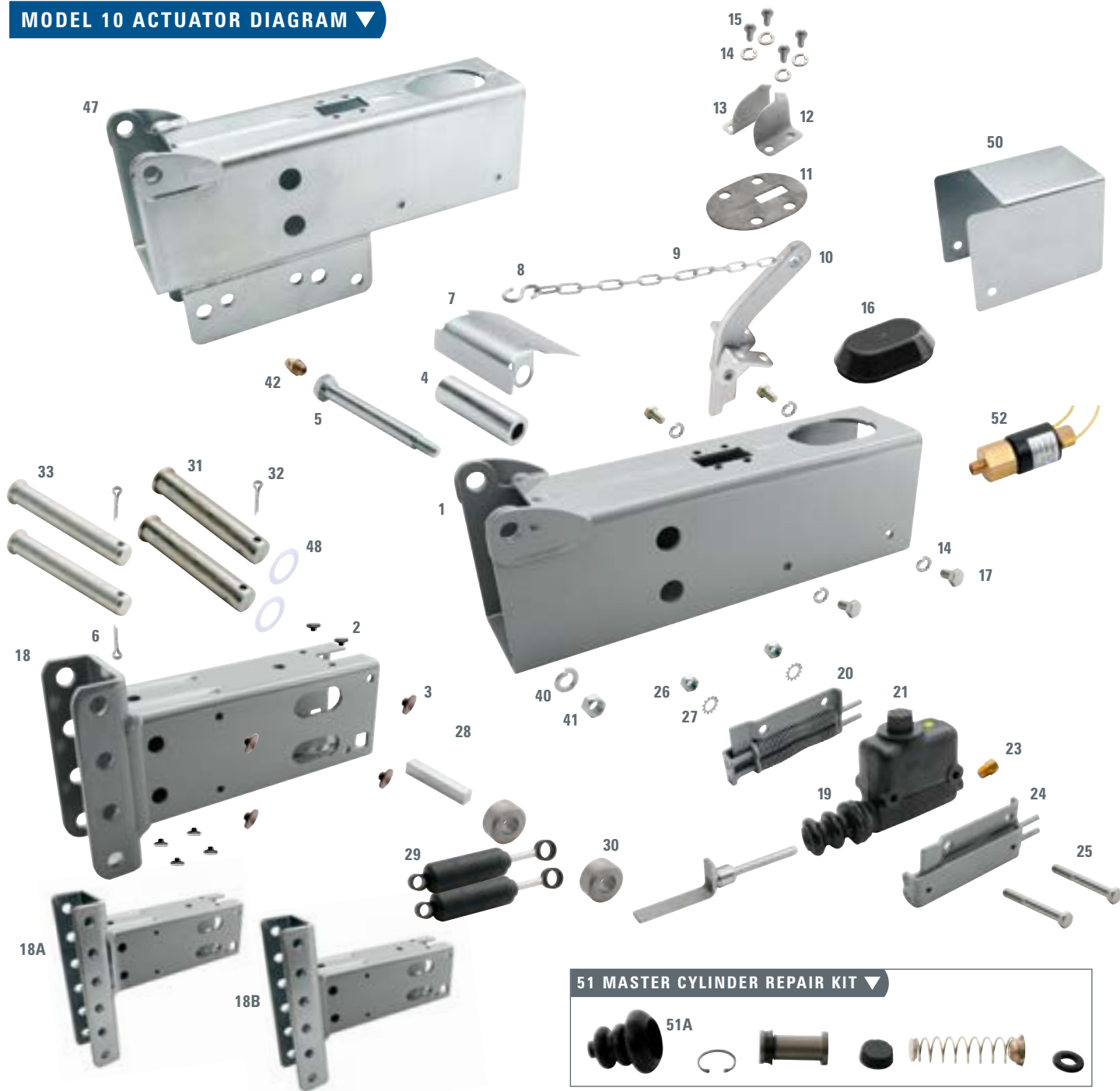


MODEL 10

MODEL 10 ACTUATOR DIAGRAM ▼



MODEL 10 ACTUATOR PRODUCT LIST

Part No. Drum	Part No. Disc	Description	Attachment	Inner	Outer
1608000		No Coupler, Painted	Weld-On	1593300	1601600
1664900		No Coupler, 2.5" Offset Mounting Channel	Bolt-On 1/2"	1593300	2477700317
2404600	4838000	4-Hole Leveler Channel, Painted	Weld-On	1608700317	1601600
4836700		4-Hole Leveler Channel, 1" Offset Mounting Channel, Painted	Bolt-On 5/8"	1608700317	1685500
4809700	4809900	4-Hole Leveler Channel, Plated	Bolt-On 5/8"	4721700	2478200
4809800	4810000	4-Hole Leveler Channel with Lunette Eye	Bolt-On 5/8"	4721700	2478200
	4810020	4-Hole Leveler Channel with Lunette Eye Valve and Cover	Bolt-On 5/8"	4721700	2478200
4721600		4-Hole Leveler Channel, 2.5" Offset, Plated	Bolt-On 1/2"	4721700	2477700183
2324800		4-Hole Leveler Channel, 2.5" Offset, Painted	Bolt-On 1/2"	1608700317	2477700317

MODEL 10

Part No. Drum	Part No. Disc	Description	Attachment	Inner	Outer
1607500	4749600	2-5/16" Coupler, Straight, Painted	Weld-On	1608400317	1601600
	4749610	2-5/16" Coupler, with Cover	Weld-On	1608400317	1601600
	4749620	2-5/16" Coupler, with Solenoid Valve and Cover	Weld-On	1608400317	1601600
1664300		2-5/16" Coupler, 2.5" Offset, Painted	Bolt-On 1/2"	1608400317	2477700317
2477600	4750800	2-5/16" Coupler, 2.5" Offset, Plated	Bolt-On 1/2"	1608400183	2477700183
	4750810	2-5/16" Coupler, 2.5" Offset, Plated, Cover	Bolt-On 1/2"	1608400183	2477700183
	4850820	2-5/16" Coupler, 2.5" Offset, Valve and Cover	Bolt-On 1/2"	1608400183	2477700183
1735200	4830300	2-5/16" Drop Coupler, Painted	Weld-On	2478300317	1601600
	4837900	2-5/16" Drop Coupler with Valve and Cover	Weld-On	2478300317	1601600
1772700	4830100	2-5/16" Drop Coupler, 1" Offset Mounting Channel	Bolt-On 5/8"	2478300317	1685500
2478100	4750600	2-5/16" Drop Coupler, Plated	Bolt-On 5/8"	2478300183	2478200
	4750610	2-5/16" Drop Coupler, Plated, with Cover	Bolt-On 5/8"	2478300183	2478200
	4750620	2-5/16" Drop Coupler, Pld, with Solenoid Valve and Cover	Bolt-On 5/8"	2478300183	2478200
4299600		2-5/16" Drop Coupler, 2.5" Offset Mounting Channel	Bolt-On 1/2"	2478300183	2477700183
1890900		4-Hole Leveler Channel with 2-5/16" Coupler	Weld-On	1608700317	1601600
4238300		4-Hole Leveler Channel with 2-5/16" Coupler	Bolt-On 5/8"	1608700317	1685500
1607900		4-Hole Leveler Channel with 2 Bolt Clevis Hitch	Weld-On	1608700317	1601600
1891100		4-Hole Leveler Channel with Lunette Eye and Bolts	Weld-On	1608700317	1601600
4238500		4-Hole Leveler Channel with Lunette Eye and Bolts	Bolt-On 5/8"	1608700317	1685500
1607700		3" Lunette Eye, Painted	Weld-On	1608600	1601600
1664500		3" Lunette Eye, 2.5" Offset Mounting Channel	Bolt-On 1/2"	1608600	2477700317
4848900	4848800	6-Hole Offset, with Lunette Eye and Bolts	Weld-On	4848700317	1601600
4850600		6-Hole Offset, Flat Mounting Plate	Weld-On	4848700317	4850500317
4857200		6-Hole Offset	Bolt-On 5/8"	4848700183	2478200
4857220	4857020	6-Hole Offset, with Solenoid Valve and Cover	Bolt-On 5/8"	4848700183	2478200
4857320	4857120	6-Hole Offset, Painted, with Solenoid Valve and Cover	Bolt-On 5/8"	4848700317	1685500
4857520	4857420	6-Hole Offset, with Solenoid Valve and Cover	Weld-On	4848700317	1601600
4867500		6-Hole Centered	Bolt-On 5/8"	4867800317	1685500
4867510		6-Hole Centered with Solenoid Valve	Bolt-On 5/8"	4867800317	1685500
4867520		6-Hole Centered with Solenoid Valve and Cover	Bolt-On 5/8"	4867800317	1685500
	4867400	6-Hole Centered	Bolt-On 5/8"	4867800183	2478200
	4867410	6-Hole Centered with Cover	Bolt-On 5/8"	4867800183	2478200
	4867420	6-Hole Centered with Solenoid Valve	Bolt-On 5/8"	4867800183	2478200
4866500		6-Hole Centered with Solenoid Valve and Cover	Bolt-On 5/8"	4867800183	2478200

MODEL 10 ACTUATOR PARTS LIST

Ref No.	Part No.	Description	Quantity	Ref No.	Part No.	Description	Quantity
1	1601600	Outer Case, Painted	1	*	1209900	Orifice, Drum, Early Type, 1/2" NF Thread	1
2	1020900	Bearing (Top and Bottom) .125" Thick	6	*	0774500	Gasket, For Use with Earlier 1209900 Orifice	1
3	1242700	Bearing (Side) .075" Thick	8	24	0838900	Cylinder Bracket, Left Hand	1
4	1601900	Front Roller	1	25	0827100	Hex Bolt, 3/8" - 16 NC x 3" Long	2
5	0828800	Front Roller Bolt	1	26	0797600	Hex Nut 3/8" NC	2
6	0799700	Cotter Pin 1/8" x 1"	2	27	1255200	Star Lockwasher 3/8"	2
7	1601800	Front Roller Cover	1	28	0830100	Push Rod Block	1
8	0776800	Breakaway Chain	1	29	1242600	Damper	2
9	1055500	S-Hook	2	30	0829100	Rear Roller	2
10	1054100	Breakaway Lever Assembly	1	31	1593500	Master Pin	2
11	1055200	Weather Seal	1	32	0815200	Cotter Pin 3/16" x 1-1/4"	2
12	1052600	Breakaway Lock - Left Hand	1	33	1593400	Damper Pin	2
13	1052700	Breakaway Lock - Right Hand	1	40	0793700	Lockwasher, 1/2" Standard	1
14	0793800	Lockwasher, 5/16" Standard	8	41	0798500	Hex Nut 1/2" - 13 NC	1
15	0794900	Hex Bolt 5/16" - 18 NC x 5/8" Long	4	42	0144901	Grease Zerk	1
16	1507000	Cylinder Cover	1	47A	2478200	Outer Case, 1" Offset Mounting Channel, Plated	1
17	0794800	Hex Bolt 5/16" - 18 NC x 1/2" Long	4	47B	1685500	Outer Case, 1" Offset Mounting Channel Painted	1
18	1608700317	Inner Slide, 4-Hole Leveler	1	48	1861900	Nylon Flat Washer	2
18A	4848700183	Inner Slide, 6-Hole Leveler, Offset	1	*	2374600	Drum Brake Master Cylinder Assy with Brackets	1
18B	4867800317	Inner Slide, 6-Hole Leveler, Centered	1	*	4749501042	Disc Brake Master Cylinder Assy with Brackets	1
19A	2374400	Master Cylinder, 1-1/4" Bore, Drum Brake	1	50A	4836100183	Backup Valve Cover, Plated	1
*	4831600	Master Cylinder, Drum Brake with 1209800, Orifice	1	50B	4836100	Backup Valve Cover, Painted	1
19B	4747100	Master Cylinder, 1-1/4" Bore, Disc Brake	1	51	1018700	1-1/4" Master Cylinder Repair Kit for 2374400	1
20	0838800	Cylinder Bracket, Right Hand	1	51A	4359100	Master Cylinder Boot	1
21	4830601	Filler Cap with Diaphragm	1	52	4748800	Solenoid Backup Valve, Male 1/8" NPT and 3/8" x 24 NF with Inverted Seat	1
23	1209800	Orifice Connector, Drum, .015", 1/8" NPT	1				

Note: * = not shown in diagram

Shaded part #'s ending in "10" have solenoid covers only. Shaded part #'s ending in "20" have solenoids with covers. Unshaded part numbers do not have solenoids or covers.