



HIGHLIGHTER™ LED MINI-LIGHTBARS

available in: 



454101HL-02

> Features

- Low profile; only 2.7" tall
- 360-degree light distribution
- Solaris® LED reflector technology
- ROC (Reliable Onboard Circuitry™) technology
- Pattern selection using MagnetSelect™ (magnet not included)
- 5-year warranty

> Approval

- SAE J845, Class 1

Low-profile LED mini lightbar provides 360-degrees of light output

Only 2.7-inch high (permanent mount), the HighLighter LED mini-lightbar features Federal Signal's patented Solaris® LED reflector technology to re-direct light for substantially improved off-axis warning. Solaris reflectors provide 360-degrees of light output for work zone warning.

Advanced circuitry keeps this lightbar on the road

HighLighter LED units incorporate Federal Signal's ROC (Reliable Onboard Circuitry™) technology, which eliminates 85% of potential failure points. The end result: Dependable and continuous visual warning with fewer repairs and a lot more time on the job.

As easy to install as they are to switch from one flash pattern to the next

The HighLighter LED suction-cup and magnet mount models include a cigarette lighter plug and built-in ON-OFF switch that makes them simple to install and just as simple to operate. Incorporated into the top of the LED dome is Federal Signal's innovative MagnetSelect™ feature (patent pending) that enables users to quickly, easily select from more than 19 user selectable flash patterns using a simple magnet (user provided).

Built for a variety of applications

The HighLighter LED mini-lightbar is available with Amber LEDs with a clear or amber dome. Suitable for a variety of applications—snowplows, landscaping, construction, repair and service vehicles, as well as law enforcement and fire apparatus.



On/Off control
switch on cigarette
plug magnet mount
models



> **How to Order**

Specify model.

Solid color, suction-cup mount, includes cigarette plug with on/off switch

- 454100HL-02** Amber dome, Amber LEDs
- 454100HL-25** Clear dome, Amber LEDs

Solid color, permanent mount

- 454101HL-02** Amber dome, Amber LEDs
- 454101HL-25** Clear dome, Amber LEDs

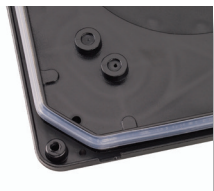
Solid color, magnet mount with cigarette plug included

- 454102HL-02** Amber dome, Amber LEDs
- 454102HL-25** Clear dome, Amber LEDs

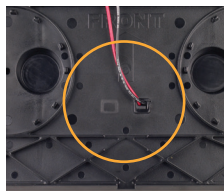
Note: See Price Books for additional models



For ease of service while on the vehicle, the dome can be removed from the base by simply removing (4) screws and lifting the dome in from one of the notches in the base.



A wiper gasket blade improves the seal of the dome.



On the bottom of the base, are two knock-outs with a strain-relief for power and ground or for additional wiring.

Accessories and Kits

- SW2** Switch control
- 452340** Kit, magnetic mount, cigarette plug included
- 452341** Kit, suction-cup magnetic mount, cigarette plug included
- 452342** Kit, magnetic mount, no cigarette plug
- 454217** Kit, riser mount
- 454218** Kit, flat mount
- 454219** Kit, Roof Mount Bar (must be used when mounting a HighLighter on a roof mounting bar)
- 454220** Kit, switch, pattern select
- 210883SSG** Self-leveling bracket
- 210960-46** 46", Roof Mounting Bar
- 210960-54** 54", Roof Mounting Bar
- 210960-65** 65", Roof Mounting Bar

Specifications			
Amp Draw	Max: 4A (total amp draw depends on flash pattern used)		
Flash Rate	Various		
LED Count	26		
LED Color Options	Amber		
Lens Color Options	Amber and Clear		
Physical Specifications			
	Permanent mount	Magnetic mount	Suction-cup mount
Length	15.3 in. (38.8 cm)		
Width	8.4 in (21.3 cm)		
Height	2.7 in (6.6 cm)	3.0 in (7.6 cm)	3.0 in (7.6 cm)
Ship Weight			
	3.4 lbs (1.5 kg)	4.5 lbs (2.0 kg)	6.0 lbs (2.7 kg)